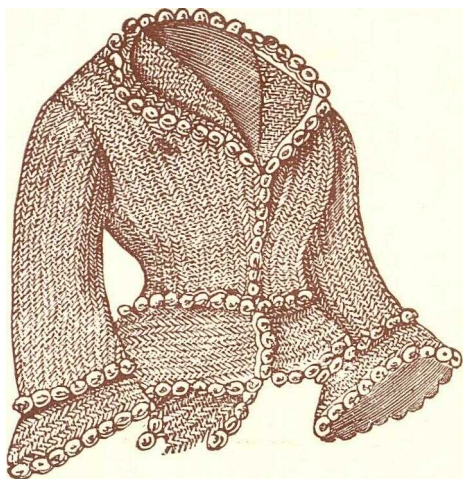


The jacket shown in Fig. 124 is made with soft wools, in colors to suit the taste, and is made flat-web, narrowed or widened to suit



124. Ladies' Jacket.

for trimming, etc. In some of the stitches where the work is not open enough, every other needle may be taken out of the fine cylinders, and then arrange the needles according to the instruction given ; many beautiful designs of work can be made by intermingling the fancy stitches together and knitting a few rounds of plain knitting between them or a number of plain stitches around the cylinder, or in the web alternately with the fancy stitches and squares, triangles, diamonds, monograms, etc.

Bed spreads, carriage robes, shawls, window curtains, antimacassars, etc., can be knit in strips and joined on the machine or with the needle, and may be pressed and lined, when desired.

127. *The tidy stitch :*

Set-up flat-web three needles in and two needles out : lift out of action all but three needles on the right hand side ; knit one row of stitches on the three needles ; lift up the first needle

the shape and trimmed with work made with some fancy stitches for trimmings. Other shaped sleeves may be used and finally finished with button-holes and buttons. Many other styles can be made in shape and trimmings. See Fig. 125 for ladies' cape.

126. *Fancy stitches without illustrations.*

Most of the fancy stitches named on the following pages can be knit flat-web or in circular work, and can be used in many of the following garments

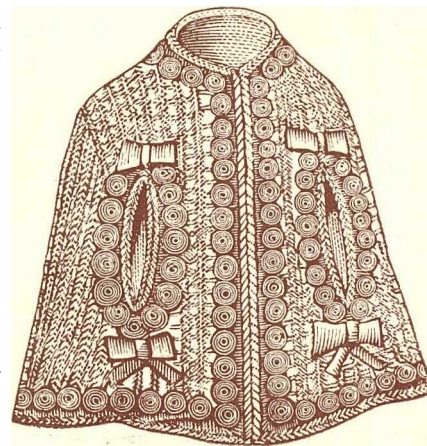
on the right ; knit across on the two needles ; depress the first needle upon the left, and knit back, and raise another on the right, and so on, each row of stitches knit ; depress one needle on the left and raise one on the right, advancing to the left until you reach that side ; then reverse the raising and depressing of the needles each row of stitches, until the right side again is reached, and continue knitting until the desired length is knit. If scalloped edging be desired, continue to advance towards each side until only two needles are left down, before returning back. Vary the pattern by setting up with two in and two out, or two in and four out, according to taste. The preceding stitches are all made by lifting out of action certain needles, and then depressing them and raising others between the rows of stitches, and can be knit more rapidly than those that follow, which are made by transferring stitches from one needle to another by means of the work-hook.

128. *Imitation Moss :*

Knit flat-web on ten needles of the required width and length ; wet the web and press with a warm iron and ravel out all the stitches except two or three rows on one side of the flat-web, and use for trimming mats.

129. *Cord Mat :*

Knit cord on four needles, one yard long, and another yard of a second color of yarn ; place the cord where the two colors meet, in the centre of a piece of canvas and sew the two cords on spiral form, and finish with a double fringe, moss rouching, or shell-work ; shaded yarn may be used in place of the two colors.



125. Ladies' Cape.